

About DataVan



World-Leading POS Solution Provider

Founded in 1986, DataVan is one of the global substantial POS terminal providers. With outstanding performance to service worldwide clients, DataVan has a variety of successful experiences to provide appropriate and innovative solutions for different needs.

Software



DataVan Central / IoT Device Asset Management

DataVan Central is a powerful UEM (United Endpoint Management) platform to remotely connect all DataVan POS through cloud by PC, tablet, or mobile phone to monitor devices and update software.

- Remote Update and Maintenance
- Data Visualization
- Real-Time Alarm



datavan
Build for Point of Services



Product Profile



POS



KIOSK



Box PC



Software



POS Peripherals



Contactless Access
Control Solution

DataVan International Corporation

10F., No. 186, Jian 1st Rd., Zhonghe Dist.,
New Taipei City 23553, Taiwan

+886-2-8227-2556

+886-2-8227-2330

inquiry@datavan.com.tw

www.datavan.com.tw

POS

TANGO Series

Enhance customer engagement

- 15.6-inch ultra-slim touch screen
- Multiple system platform and OS for applications
- Award-winning design for flip-over display
- Extensive peripheral connectivity
- "Building block" modular enclosure



Windows android 10 intel CE FCC

SATURN Series

Create a connected experience

- 15-inch bezel-free and ultra slim touch screen
- Multiple system platform and OS for applications
- 3 optional foot stands for varied purposes
- Easy to swap storage device
- Color matching service
- Extensive peripheral connectivity



Windows android 10 intel CE FCC

ARC Series

Space-saving and all-in-one design

- Multiple system platform and OS for applications
- 15.6-inch ultra-slim touch screen
- Revolutionary flip-over display
- Semi-integrated thermal printer
- Modern and stylish design



Windows android 10 intel CE FCC

GLAMOR Series

Flexible design to fit various store settings

- Newest Intel® 11th gen. SoC processor
- 15-inch bezel-free touch screen
- Fully fan-less operating
- Slim, smart, and stylish mechanical design
- Ergonomic dual-hinge stand
- High-level water & dust resistance



Windows intel CE FCC

WONDER Series

Spend less for more values

- Newest Intel® Elkhart Lake SoC processor
- 15-inch bezel-free touch screen
- Water/dust proof front bezel
- Small footprint
- Well-organized cable management



Windows android 10 intel CE FCC

VIVA Series

Compelling package at an affordable price

- Newest Intel® Elkhart Lake SoC processor
- Easy access and swap SSD design
- Projected capacitive 10-point multi-touch
- Rugged aluminum die-casting enclosure
- Ultra slim and fan-less design



Windows intel CE FCC

HiFive Series

Versatile, multi-purpose and secure fanless touchscreen terminal

- Intel® Celeron™ processor for Windows 10 IoT and Linux operating systems
- Ultra slim enclosure for modern commercial application
- Projected capacitive 10-Point Multi-Touch
- Table stand, wall mount, pole, embedding, customer-facing display, multitask for all application
- Supports extension modules for customer display, MSR



Windows android 10 intel CE FCC

KIOSK



Windows android 10 intel CE FCC

Mars Series

Multiple screen size self-service KIOSK

- 21.5"/23.8"/27"/32" True flat and full sealed front touch panel
- Modularized design for easy maintenance
- Longevity support for product lifetime
- Industrial grade power supply and power distribution board provide good power on sequence for system devices
- Wide range of peripherals in self-service applications such as 2D scanner, printer, RFID, NFC, Camera, MIC, Speaker and bracket for EMV payment devices



Digital Signage DKS-2150

The Next Generation Digital Signage with Epidemic Prevention Function

- Hand hygiene + multimedia demonstration to upgrade epidemic prevention and marketing
- Facial recognition + precision temperature measurement with face mask detection supported
- Sanitizer sensor with multiple types of sanitizer supported
- 21.5" high definition panel + bezel resistant glass to create amazing visual effect
- Video + picture + marquee supported, and easy layout planning
- Ultra slim + high mobility derive from remarkable design

POS Peripherals

Thermal Printer / PR-7120

High-Speed Thermal Receipt Printer

- Front paper loading
- 2"/3" paper roll compatible
- Print speed up to 250mm/s
- Low-noise operation
- Status indicators
- Windows/ Linux/ OPOS/ JPOS driver
- 3-in-1 interface: USB, Serial, Ethernet



CE FCC

Box PC



android 10 CE FCC

Puzzle 1000

The platform that open up more business possibilities

- Cortex-A17 RK3288 Quad-core 1.6GHz
- Compact and space-saving
- Fan-free, noise-free
- Tailored to business-specific needs
- Wall mount support



Windows intel CE FCC

Puzzle 2000

Desktop functionality with thin-client economy

- Intel® Celeron™ processor for Windows 10 IoT and Linux
- Rugged aluminum die-casting enclosure
- Low power consumption and Fan-less design & less internal cable
- Easy-Service design
- Wall mount support



Windows intel CE FCC

Puzzle 4000

As powerful as a Tower PC, yet still compact

- Greater CPU and graphics performance
- Highly configurable
- Dual 4K UHD display support
- Advanced security and manageability
- Perfect for digital signage, kiosk, gaming machine, and more
- Wall mount support

Contactless Access Control Solution

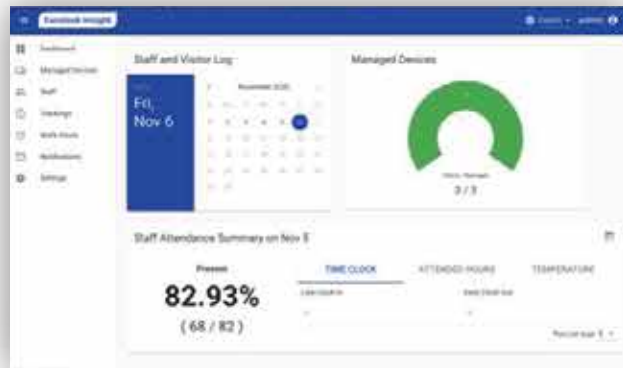
dataivan

Facelook Insight

Facelook Insight

Powerful attendance management system

- Quick search on entrance access details
- One-click to onboard devices
- Smart statistics for attendance
- Set alarm notification
- Remote control



Facelook X1

Temp detection and facial recognition integration

- Temperature measurement + face recognition access control combined together, 8-inch panel exquisite design integrated
- Accurate temperature measurement within 0.5 seconds, infrared temperature dot matrix analysis supports live detection